



# XPR Enterprise® Embedded Solution Print Control & Payment Software

## Key Function

The XPR Enterprise® Embedded Solution is software created by ICS to facilitate the secure control of print and copy document output. If required, it also allows for payments to be made on account or allocated to a cost centre.

It is compatible with Konica Minolta and Océ multifunctional devices and is 'in-built' into the device itself. It is designed to work with Pcounter, the award-winning print & copy management software from ICS.

## Features

- At point of printing, the user releases print documents on demand, securely
- Scan to email & scan to folder
- User authorisation by PIN or password
- 'In-built' user validation options for ID card or biometric integration
- No additional wiring required for simple installation
- Suitable for Konica Minolta and Océ multifunctional devices and integrates the MFD touch screen

## Benefits

- Secure and easy to use
- Print & copy cost recovery and charge back to departments, projects or users
- Reduces waste, as only verified documents are printed
- Scan functions available with 1-touch feature

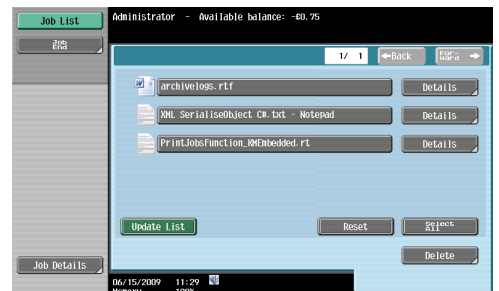
## Ideal for

- Education and academic establishments
- Local government and other public sector organisations
- Corporations, financial and professional institutions

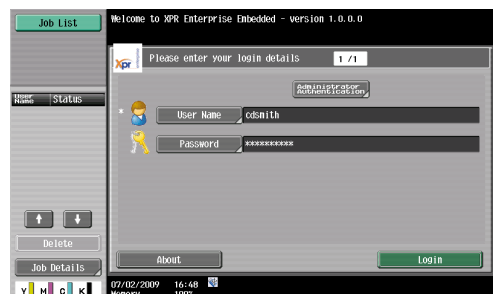
## In-Built for Easy Use

The XPR Enterprise® Embedded Solution allows the Konica Minolta and Océ devices existing touch screen to be used for both PIN/password authorisation and cost allocation without the need for additional hardware or wiring. It integrates with the ICS XPR Enterprise® Reporting suite for additional auditing capabilities and management information.

Using Pcounter in conjunction with ICS software helps reduce or eradicate printed waste.



XPR Enterprise® Embedded Print Queue Screen



XPR Enterprise® Embedded Username Authentication Screen



Print and Copy Solutions • Cashless Solutions  
Access Control Solutions • Personal ID Solutions

Integrated Card Solutions Ltd, Clarendon House, Church Lane, Naphill, Buckinghamshire. HP14 4US  
Tel: 0845 2304275/01494 565066 | Fax: 01494 564770 | Email: sales@ics-limited.co.uk

[www.ics-limited.co.uk](http://www.ics-limited.co.uk)



## About ICS



**Integrated Card Solutions Limited (ICS) is the leading supplier of print & copy control products in the UK. ICS offer a wide range of intelligent software, biometric and card-based solutions, including the proprietary XPR Enterprise® range. Together, these provide a single solution for outstanding print and copy management services, access control, photo ID (including full card encryption) and many cashless applications.**

Established in 1996, ICS has a broad client base including 80% of all tertiary educational establishments in the UK, local government and NHS Trusts as well as many commercial enterprises.

**Using the ICS XPR Enterprise® range in conjunction with carefully selected partners, our solutions provide**

- Outstanding print and copy management
- Cashless environments including cash-on-card or account based systems
- Access Control
- Flexible Photo ID

These can be combined in a one-card solution, providing an easy-to-use, scalable and flexible system. Our clients report significant cost-savings after implementation, with enhanced management control and reporting

### **ICS print and copy management solutions**

- Can reduce your print costs by between 20% and 50%
- Provide control of how, when and where documents are printed
- Provide easy-to-use management reports.

In addition, ICS employ a talented team of software developers and have delivered customised solutions to organisation across the UK.

**Delivering the best solution for *your* needs, ICS work with the best partners and people from around the world.**

Integrated Card Solutions Ltd, Clarendon House, Church Lane, Naphill, Buckinghamshire. HP14 4US  
Tel: 0845 2304275/01494 565066 | Fax: 01494 564770 | Email: sales@ics-limited.co.uk

[www.ics-limited.co.uk](http://www.ics-limited.co.uk)